

# Pittington Primary School

## Newsletter

22nd March 2024



### Calendar Dates

#### March

- 25th - Spring Parent Coffee Morning 9.00am - 10.00am
- 25th - Egg Decorating Competition Entries
- 27th - KS2 Zumba Taster Session
- 28th - Year 3/4 Easter Performance
- Year 1 Class Assembly
- School closes for Easter
- Raffle Draw



*More details will follow if your child is involved in any activities*

### After School Activities

- ☒ KS2 Cookery - Tue
- ☒ SATs Booster Y6 - Wed
- ☒ Computing Club - Wed
- ☒ AE Sports Y5/6- Fri (am)
- ☒ AE Sports Multi Skills Y1/2- Fri



### Easter Coffee Morning

*Don't forget*

25th March, 9.00-10.00am

We hope you can make our Easter coffee morning!

Any donations from parents, carers or local businesses are still being collected at the school office.

*Thank you!*

For all of your efforts with maths fancy dress this week!

**RAFFLE**

Raffle tickets are available from the school office.

£1 PER STRIP

Prizes include:

Sunday Lunch Voucher (61 Durham), Durham Beauty Centre Voucher, Janet Maitland Gift Bag, Wine, Chocolate & lots more!

### Egg Decorating Competition

All entries to be brought into school by 25th March, to be judged at our Easter Coffee Morning.





# Celebration Assembly Winners



Each week, class teachers choose one child to receive a 'Pupil of the Week' award for something notable that they have achieved. A pupil is also chosen to receive a 'Curriculum Award' for working hard in lessons.

## Pupil of the Week

Reception: James N  
Year 1: Jakub R  
Year 2: Joel R  
Year 3: Otis R  
Year 4: Jones W  
Year 5: Kai P  
Year 6: Hannah N



## Curriculum Award

Reception: Charlie W  
Year 1: Alex J  
Year 2: Millie T  
Year 3: Chloe C  
Year 4: Sam J  
Year 5: Charlie G  
Year 6: Leon G



## Attendance



Please ring the school office to report the reason for your child's absence **each day**.

Whole school  
attendance  
target

96%+

## Whole School Attendance

Week ending 1.3.24

97.4%

AMAZING



awesome

## Class Attendance

Reception: 95.56%  
Year 1: 97.00%  
Year 2: 98.62%  
Year 3: 97.04%  
Year 4: 98.00%  
Year 5: 96.43%  
Year 6: 99.05%

99.1%

Attendance Winners

**YEAR 6**



# Take a look at what has been happening at Pittington Primary School ...



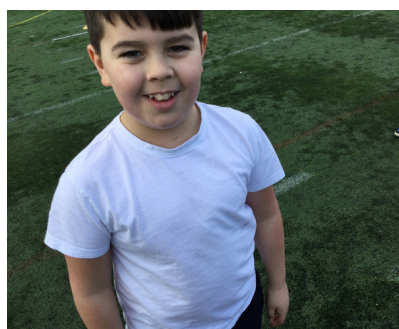
Year 4 children have been practising their safe cutting and grating techniques using a 'bridge hold' and 'fork secure' methods. We now know how to prepare food with sharp knives more safely!

Reception enjoyed a spring walk to the church and spotted signs of spring. Mr Arnott showed the children around the church and told us the story of The Lost Sheep.

The children enjoyed having time to explore and ask questions. We all had a turn in the pulpit and some of us said a prayer. We also watched a short animation of the story when we got back to school and talked about the meaning of the story.



Year 1 had a super afternoon exploring our local area identifying local landmarks and signs of Spring! The children also used their maths skills at the Village Store where they could spend some money and paid the shop keeper.



Year 5 children had a great day at the Tag Rugby Skills festival which was organised by the School Sports Partnership.

Behaviour was excellent and the children showed great resilience learning new skills



The nursery children have been learning all about dinosaurs. They made dinosaur eggs using paper mâché and decorated them with coloured paint. They then hid them in the sand pit and pretended to be palaeontologists.

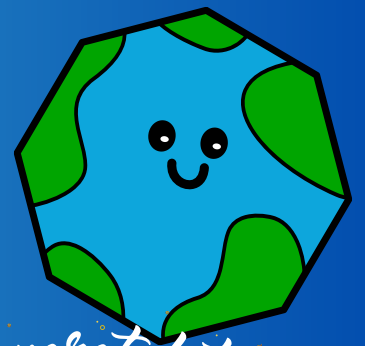






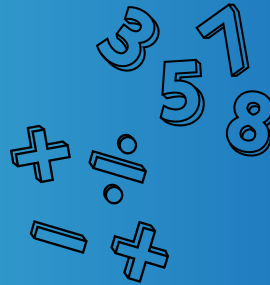
# WORLD MATHS DAY

## @ Pittington Primary School



What an amazing day filled with fun challenges, maths activities and lots of number fancy dress!! Thank you for your support.

*Congratulations!*



Take a look at some of our Extreme Maths Challenge entries ...

### Extreme Maths Challenge

